

BLAZING THE TRAIL
Vanessa Henkes

DATE
26/09/2023

BLAZING THE TRAIL

Creating a Customisable Web Map for Yellowstone and
Grand Canyon National Parks



CARTOGRAPHY M.SC.
ITC

PRESENTED BY
Vanessa Henkes

TABLE OF CONTENTS

03

INTRODUCTION

An overview of the research motivations, and key questions of the thesis.

04

STUDY SITES

Yellowstone and Grand Canyon National Parks

05

METHODOLOGY

Describing the data acquisition, website development, user study, and framework employed in the research.

06

RESULTS

Presenting the findings obtained from the conducted research.

08

ANALYSIS

An examination of the results.

09

FRAMEWORK

Discussing the conceptual framework

10

CONCLUSION

Summarizing the outcomes of the research and their broader implications.

11

FUTURE WORK

Discussing potential future research directions based on the findings and insights obtained.

INTRODUCTION

03

1872

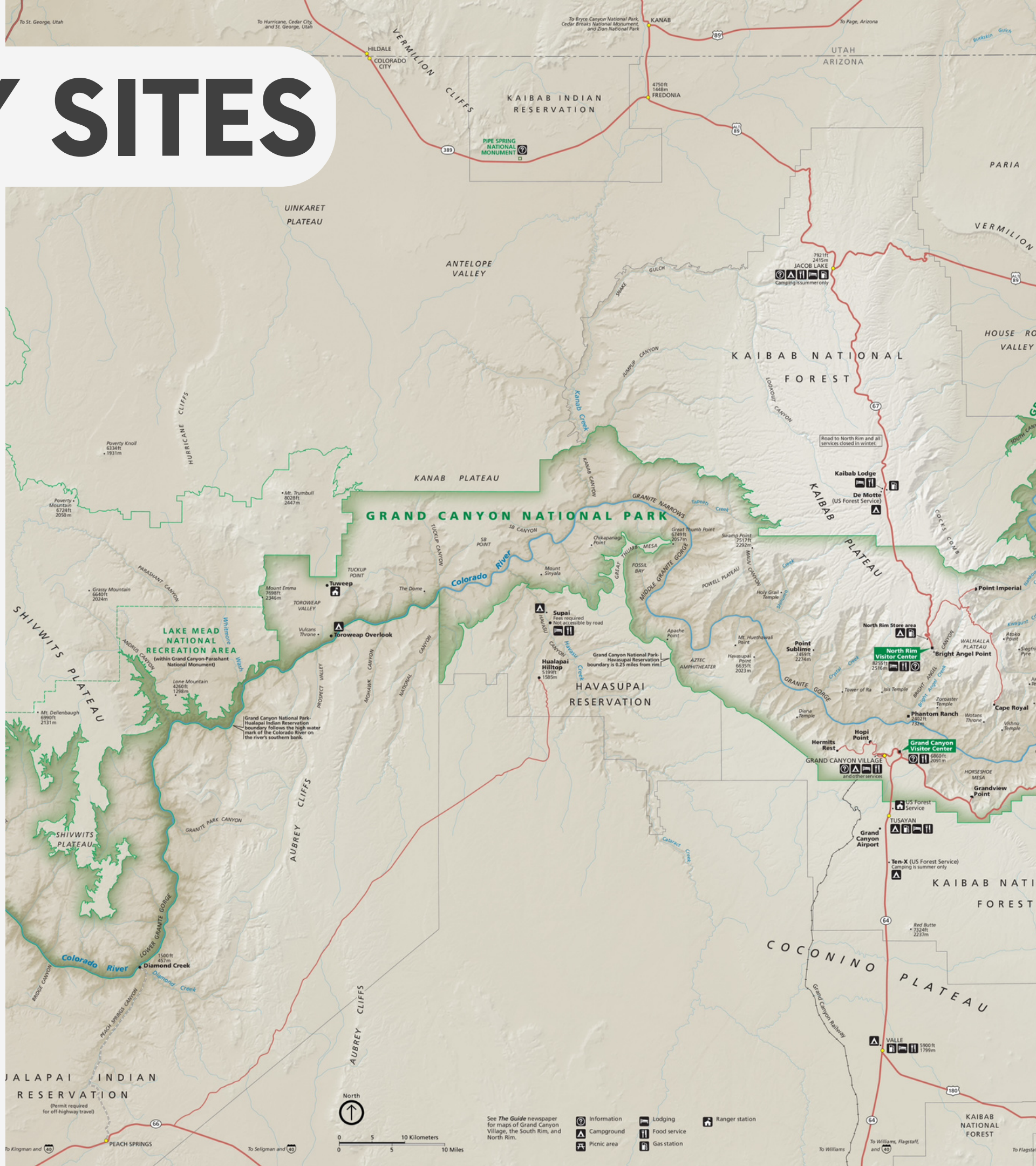
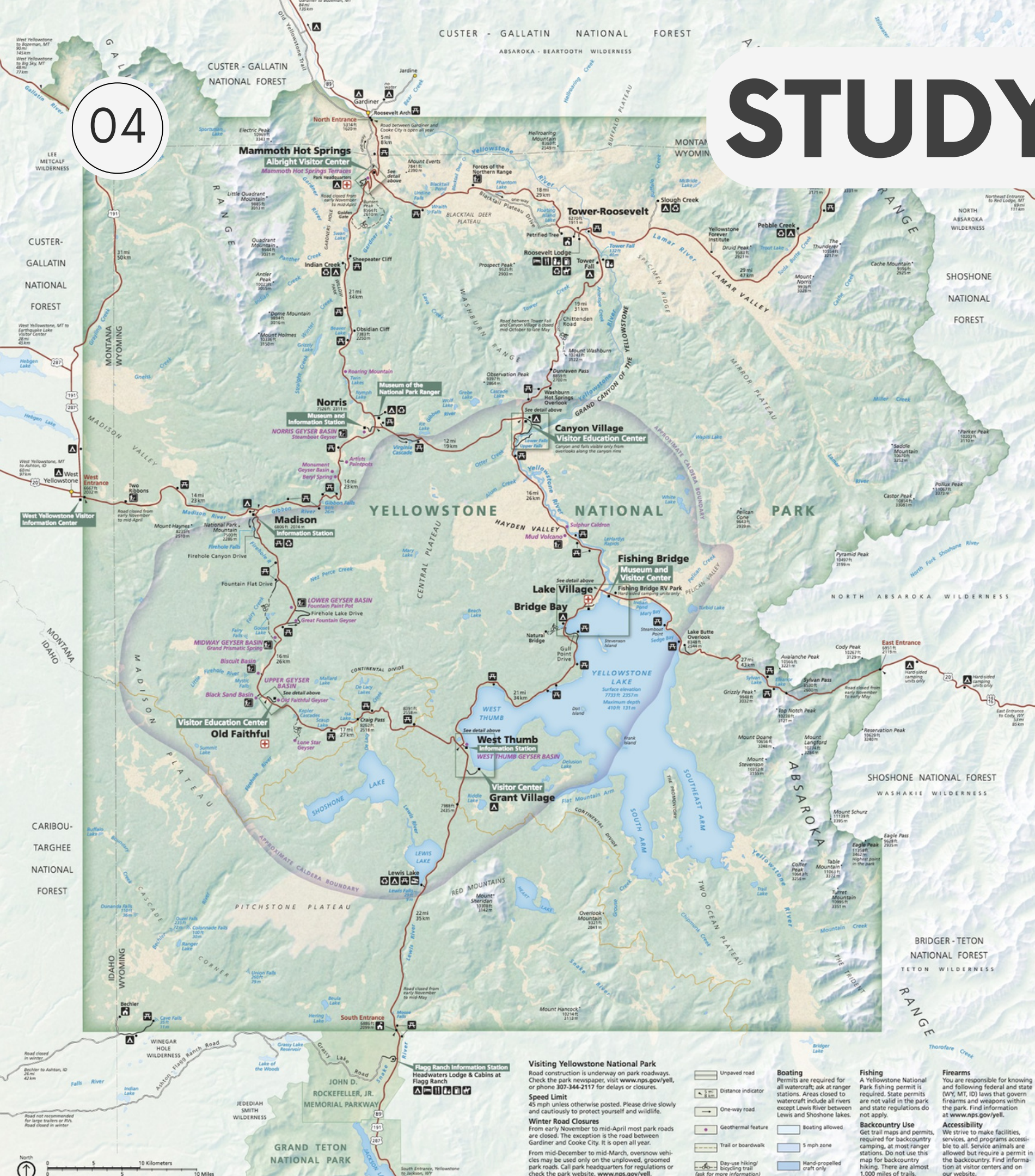
“To preserve the natural and cultural resources and values of the National Park system, unimpaired, for the enjoyment, education, and inspiration of this and future generations”

3.1 Billion USD



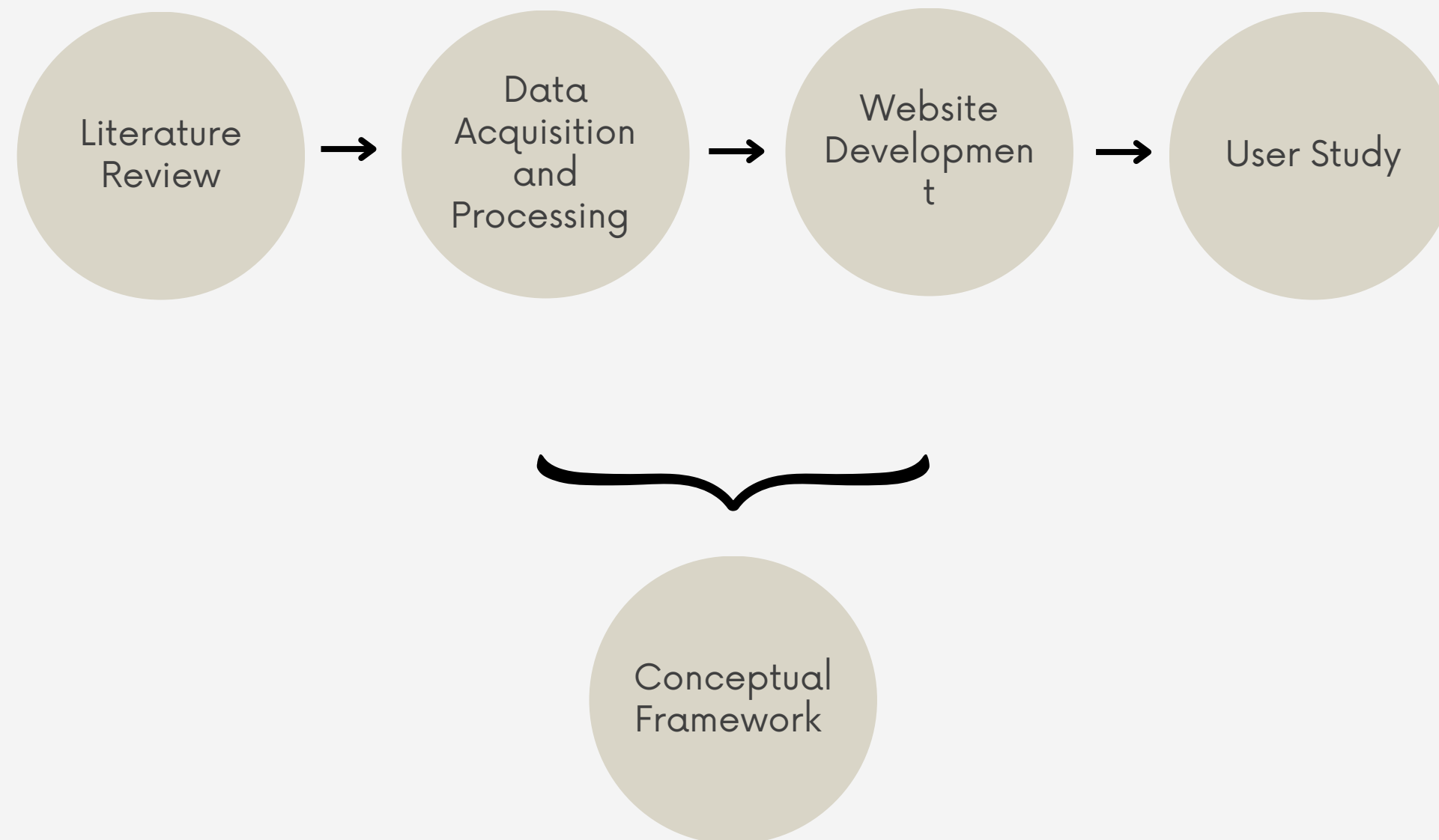
279 Million USD -
Visitor Services

STUDY SITES



METHODOLOGY

05

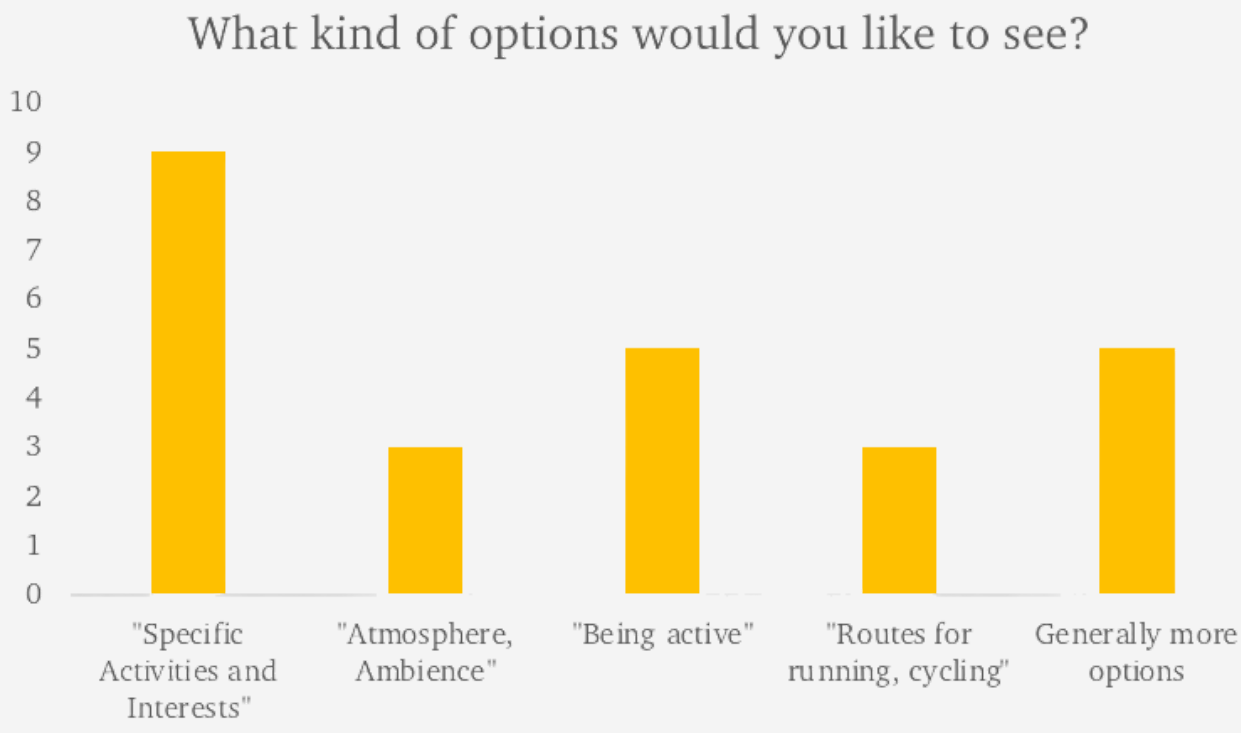
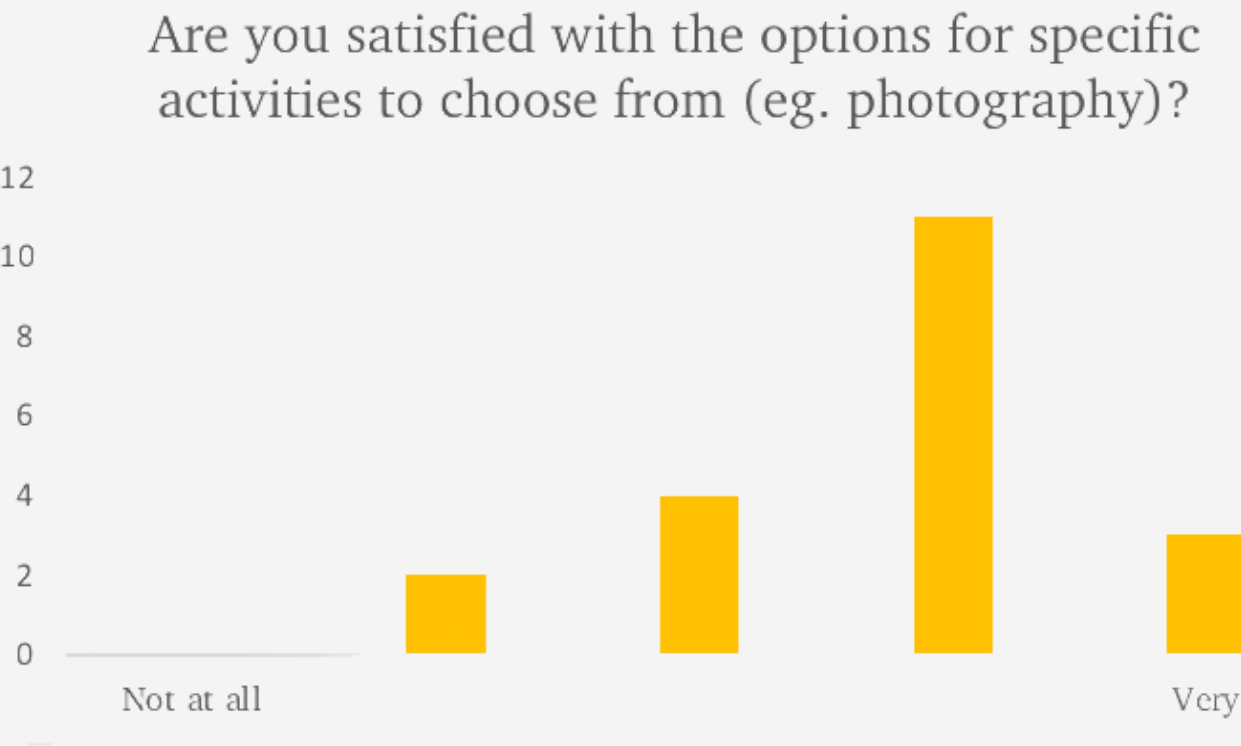


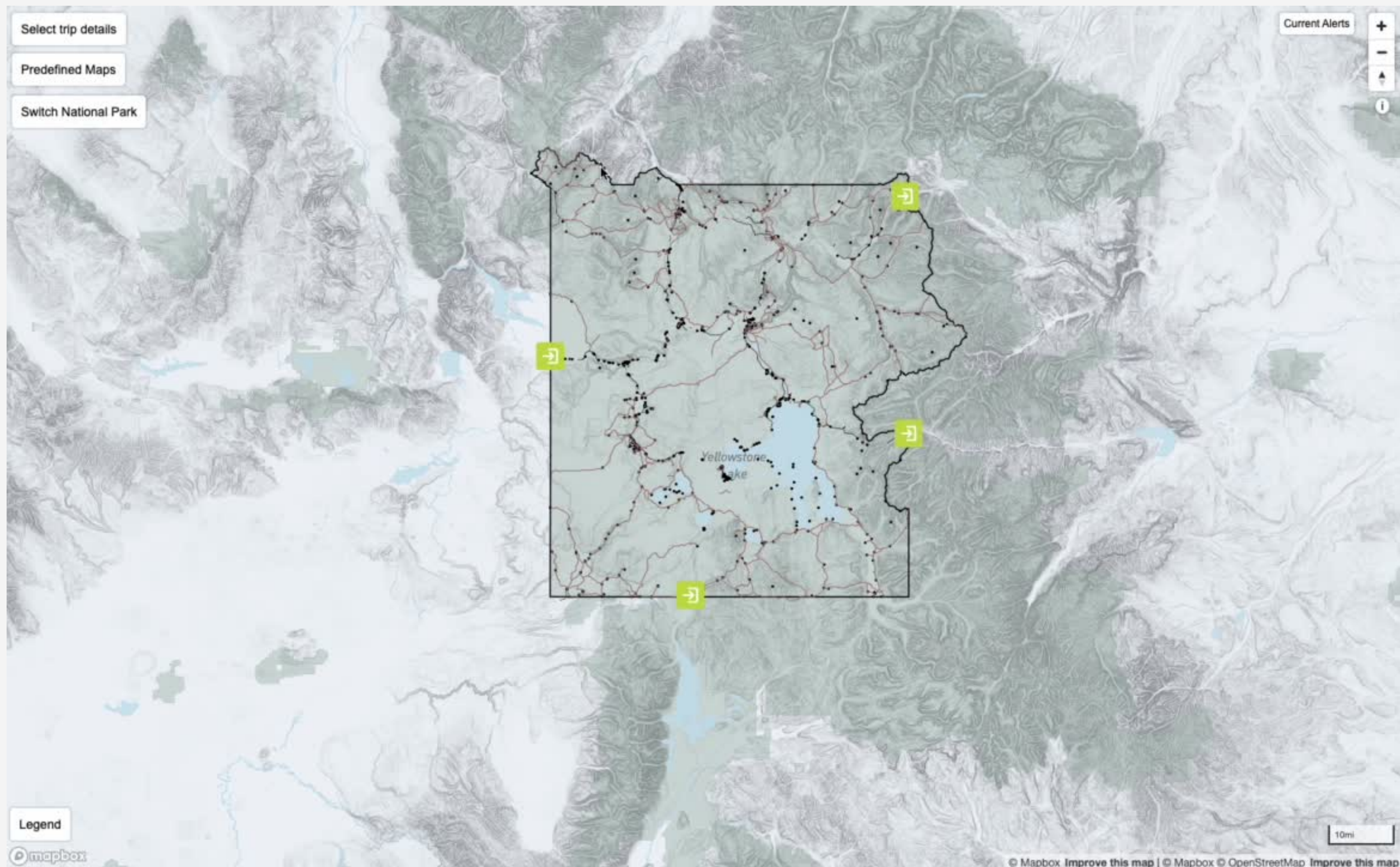
06

Statistical Analysis - mixed-methods approach

Mean, Variance, and Standard Deviation for
Likert Scale questions

Subjective clustering approach for open ended
short-answer questions





ANALYSIS

08

Sub-Section One

- participants value both filtering mechanisms
- “more information”

Sub-Section Two

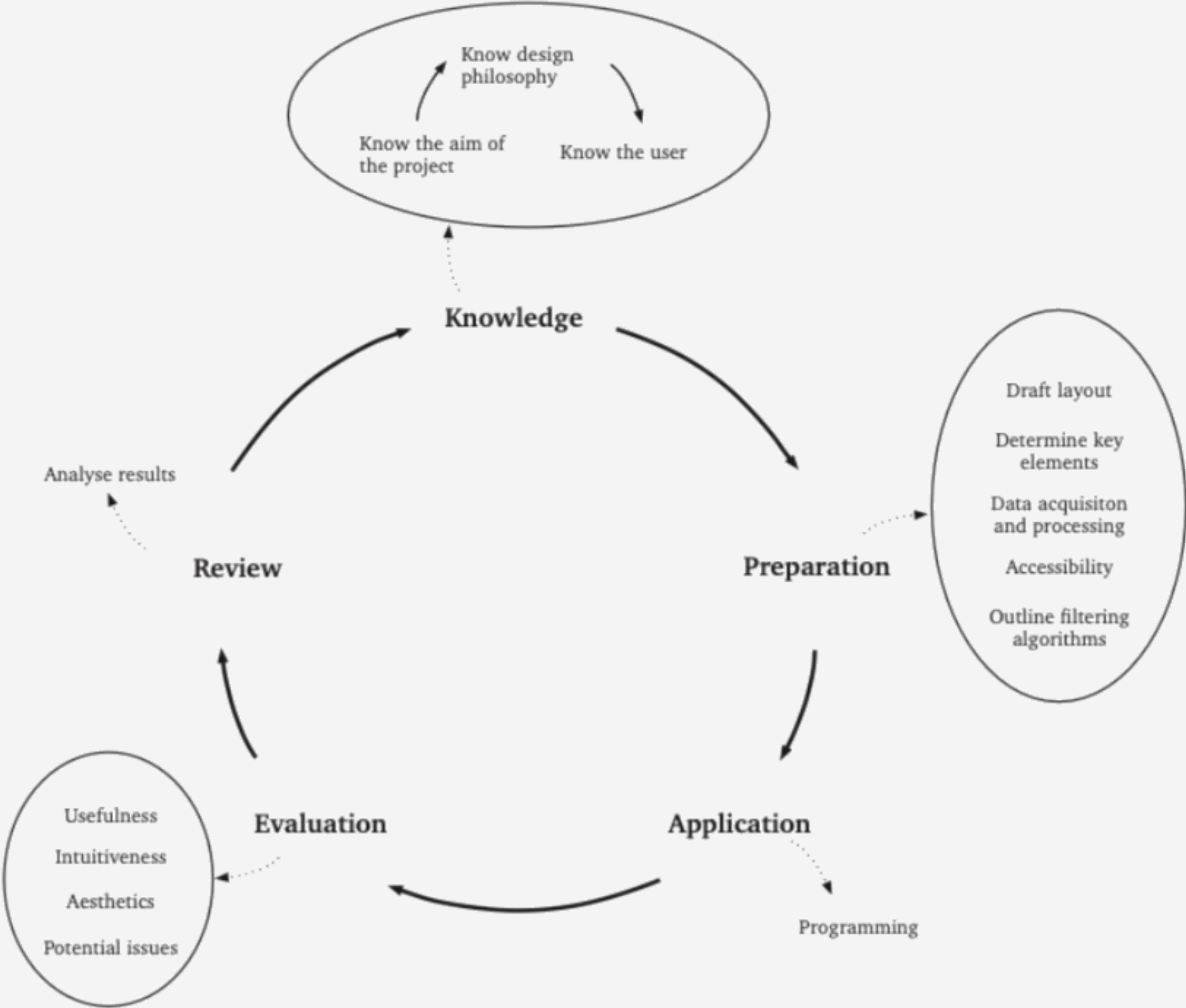
- ease of navigation
- adjusted zoom levels for POIs

Sub-Section Three

- seamless loading process
- tool for planning (no matter the time frame)

FRAMEWORK

09



CONCLUSION

10

- User study highlighted interface's intuitiveness, usefulness, and aesthetics
- Additional options like hiking and considering atmospheric factors
- Button comprehension and element visibility - added areas of improvement
- Effective for both planned and spontaneous trip planning
- Conceptual framework for creating adaptable and intuitive map interfaces
- User feedback synthesised into actionable design strategies

FUTURE WORK

11

- More user studies (with more participants)
 - continued evaluation and review of the newly added Grand Canyon NP
- More emphasis on platial (dis-)similarities between the parks and how to depict them cartographically
- Enhance and refine the code to make it easier to understand
- Enhance and refine the conceptual framework