



Live and Learn in Munich During Lockdown

by **ANA OLIVA PINILLA PACHON, GONGMINGYUE TANG, AND JONATHAN KING**

This map is for university students living and studying in Munich for the first time when government-imposed lockdown regulations (muenchen.de 2021) preventing the spread of the SARS-CoV-2 virus (coronavirus) are in place.

At such a time, many of Munich's geographies with historical importance to university students new to the city are off limits, and many still-accessible places and spaces offer significantly different experiences than in the past. Our map identifies locations that students making efforts to have good experiences living and studying in the city during a lockdown may need or desire to consider visiting.

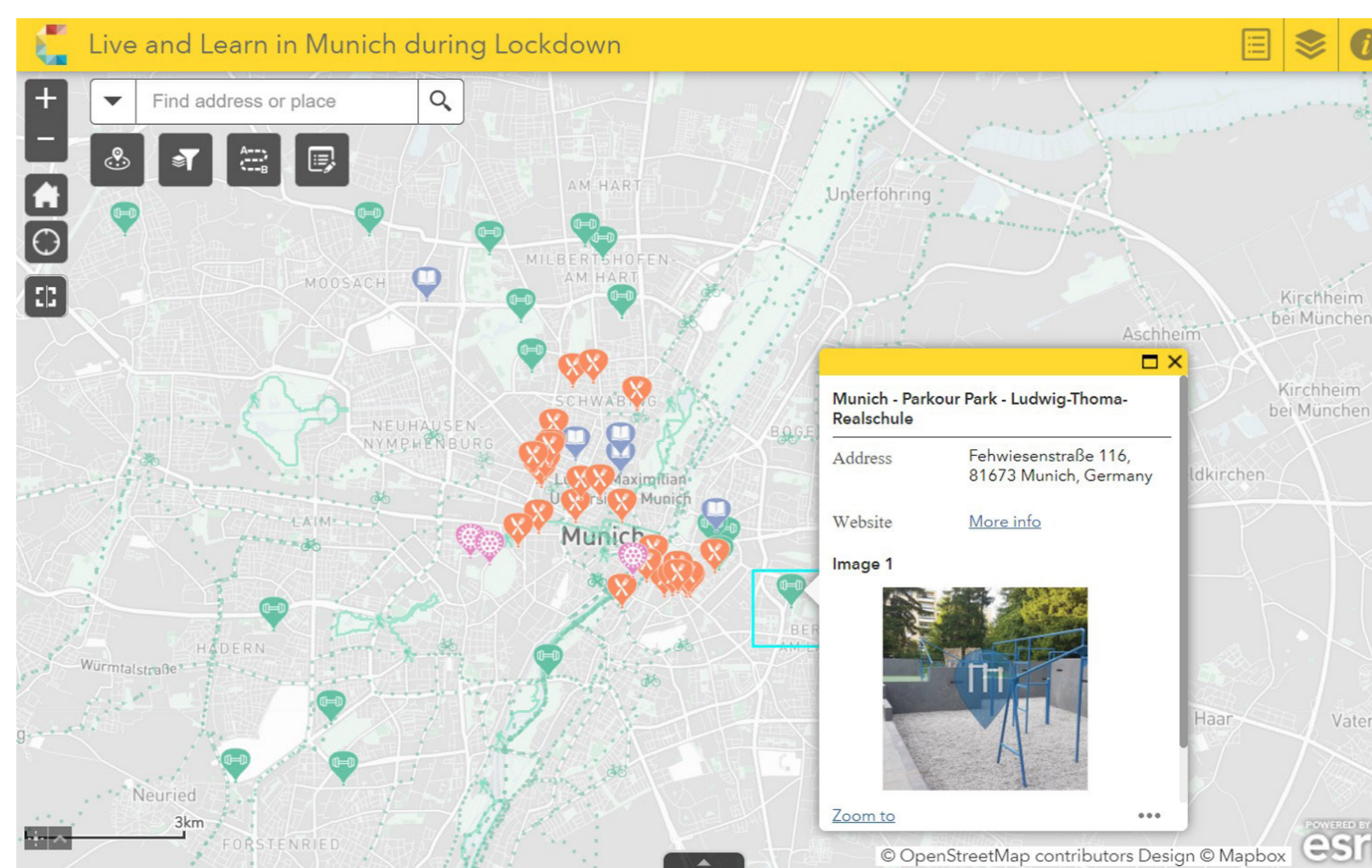


Figure 1: A map of Munich for university students, created by university students

IMPRINT

Mapping Project
Winter Semester 2020/2021
Technische Universität München
Ana Pinilla Pachon
Gongmingyue Tang
Jonathan King

SUPERVISORS

Juliane Cron, M.Sc.
Dr.-Ing. Mathias Jahnke

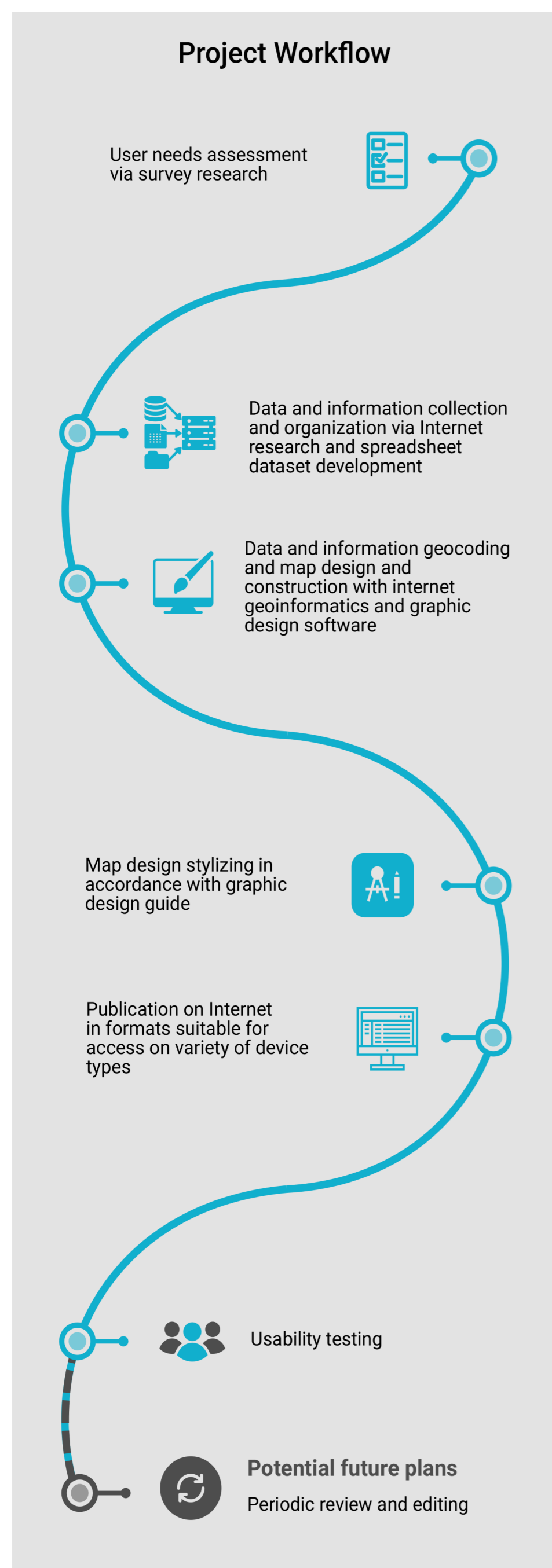


Figure 2: Making the map involved roughly seven stages of work.

USER NEEDS ASSESSMENT

A survey of university students new or recently new to Munich determined a strong need during a time of coronavirus pandemic-related lockdown for a map identifying locations of places suitable for the following activities:

1. Physical exercise outside of closed gymnasiums
2. Studying outside of living spaces and closed cafes
3. Purchasing affordable meals from food-serving businesses offering takeaway and delivery services.

DATA AND INFORMATION COLLECTION

Internet resources were consulted in an effort to learn the locations of and gather important and helpful information about study spaces, exercise spaces, and food-serving establishments in Munich suitable for the map's content.

MAP CONSTRUCTION

1. Using gpsvisualizer.com's geocoding tool, geocode addresses of places and spaces identified for inclusion in map's content.
2. On Mapbox.com, select good base map.
3. ArcGIS Online Map Viewer, create web map file making use of Mapbox.com basemap. Add point and line layers indicating locations of geographies with addresses geocoded in step 1. Add a point layer indicating the locations of coronavirus test centers.
4. In ArcGIS Online Web AppBuilder, select appropriate map projection. Additionally, draft map introduction text, create map legend, and integrate interactive features.

DESIGN STYLE GUIDE

Typefaces
Display: Verdana
Lead: DIN Pro
Support: Merriweather

Color Palettes

Category Symbols

Figure 3: A visual communications design style guide was developed during map stylizing process to provide helpful creative direction parameters.

PUBLICATION

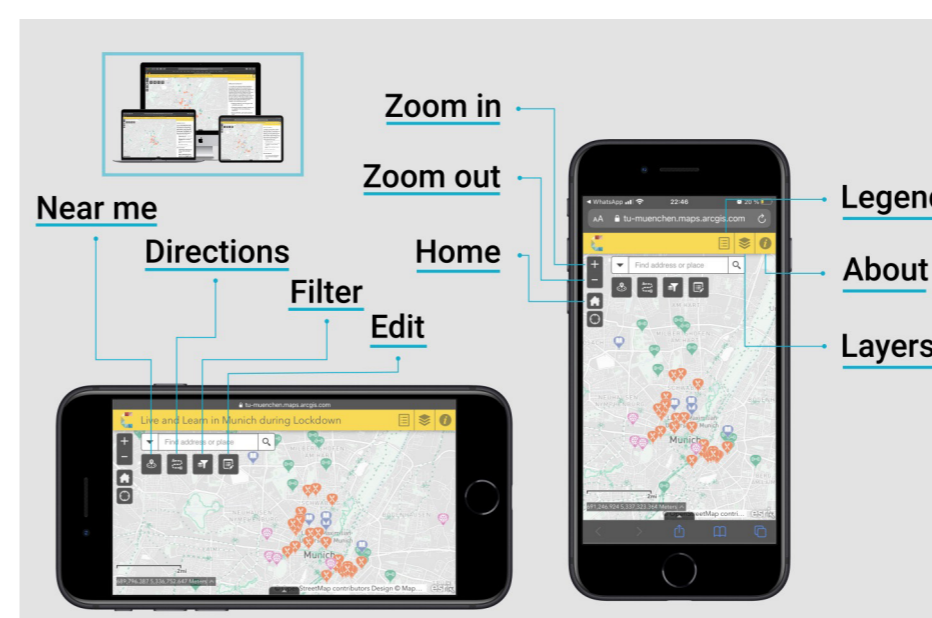


Figure 4: The interactive web map is easy to access and use on a variety of device types.

CONCLUSION

The map is limited in time and space. We hope the lockdown and pandemic will end in a short time and all the wonderful places in Munich that are currently off limits will reopen. Until that happens, we think this map is necessary and important. We hope to grow its content over time with user-generated information. Even after the pandemic is over, we think it may retain usefulness as a guide or space for sharing information.

KEYWORDS

lockdown, student, university, Munich

LINK

<https://tu-muenchen.maps.arcgis.com/apps/webappviewer/index.html?id=94a2045aad1f46e7bb2f5a71a680dcf5>

QR CODE



REFERENCES

- [1] "Coronavirus: Current Rules and Restrictions in Munich" Muenchen.de [web page] Retrieved from <https://www.muenchen.de/int/en/events/bavaria-declares-state-of-emergency.html> on 1 February 2021