

An aerial photograph of Dresden, Germany, showing the Elbe river winding through the city. The image is overlaid with a semi-transparent blue filter. The title text is centered in the upper half of the image.

Methodology for Producing a Hand-Drawn Thematic City Map

submitted for the academic degree of: Master of Science (M.Sc.)
at Technische Universität Dresden
by: Aika C. Jensen



Objective

1



Literature Study

2



Methodology

3



Application

4



Discussion

5



Objective:

Develop Methodology

1. Historic map aesthetics
2. Modern map perspective
3. Key factors of focus

Literature Study:



Foundations:

Art and Science
Creativity



Foundations:

Art and Science



Foundations:

Creativity



Current Work



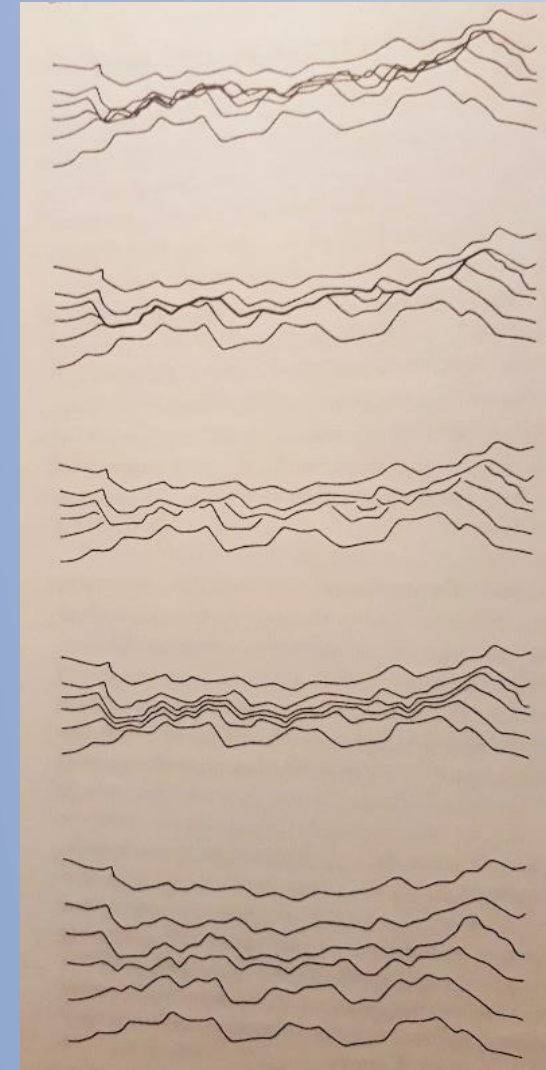
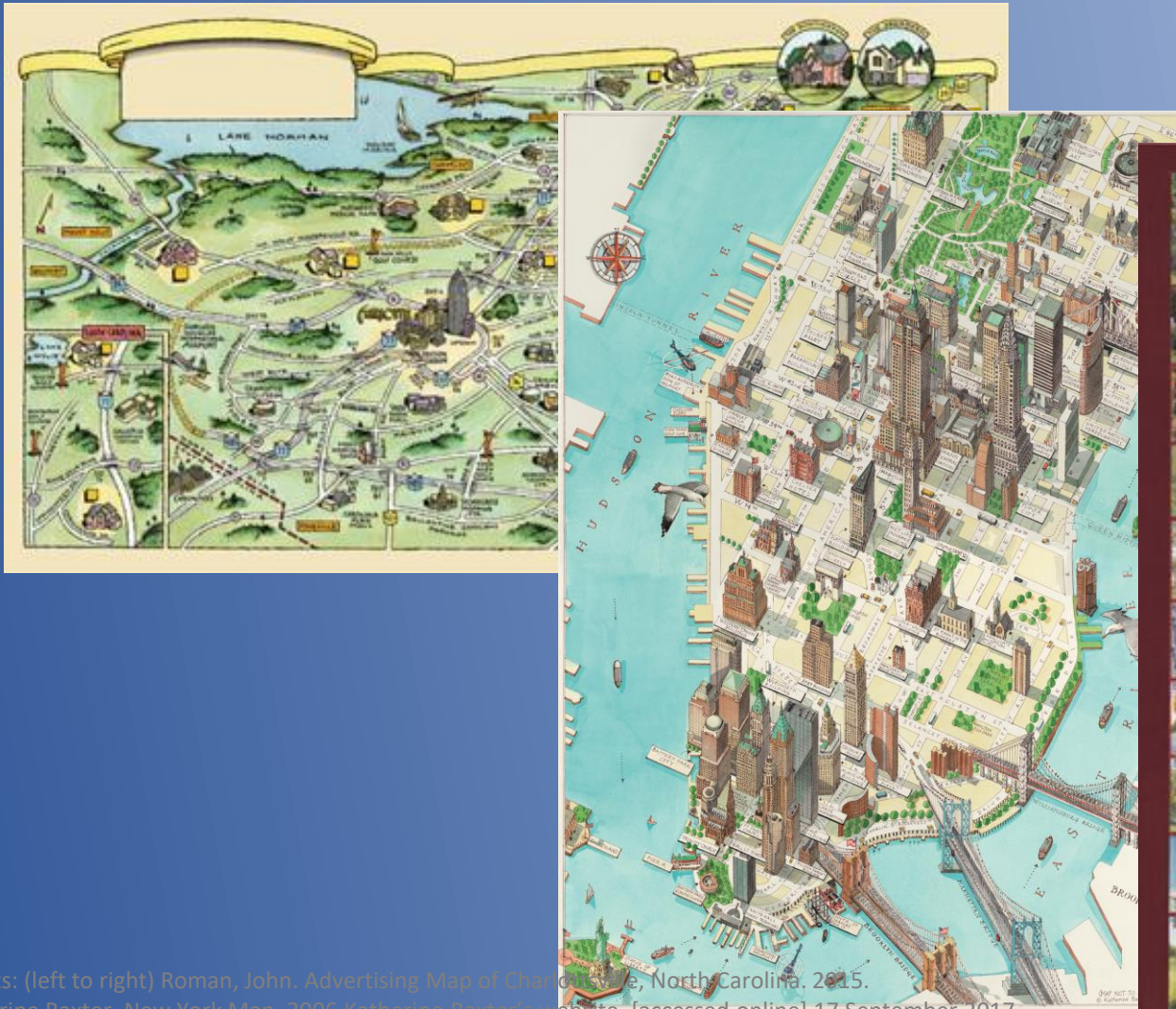


Photo: Lin, Maya. Blue Lake Pass. 2012. Pace Gallery. The Tartan. [accessed online]. 17 September 2017.

Photo: (left) Imhoff, Eduard. Contours of an overhanging rock wall. 2007. Cartographic Relief Presentation. Eduard Imhoff. California: 2007. p. 254



Credits: (left to right) Roman, John. Advertising Map of Charlotte, North Carolina. 2015.
Katherine Baxter. New York Map. 2006. Katherine Baxter's website. [accessed online] 17 September 2017
Randy Green. Historic Pennsylvania

Methodology:



1. Visual Analyses
2. Key Factors of Focus
3. Sketch Development
4. Final Map Creation



1. Visual Analysis

Purpose: Isolate motifs



1. Visual Analysis

Description

Analysis

Context

Judgement



2. Key Factors of Focus

Perspective

Degree of Abstraction

Graphic Style

Color



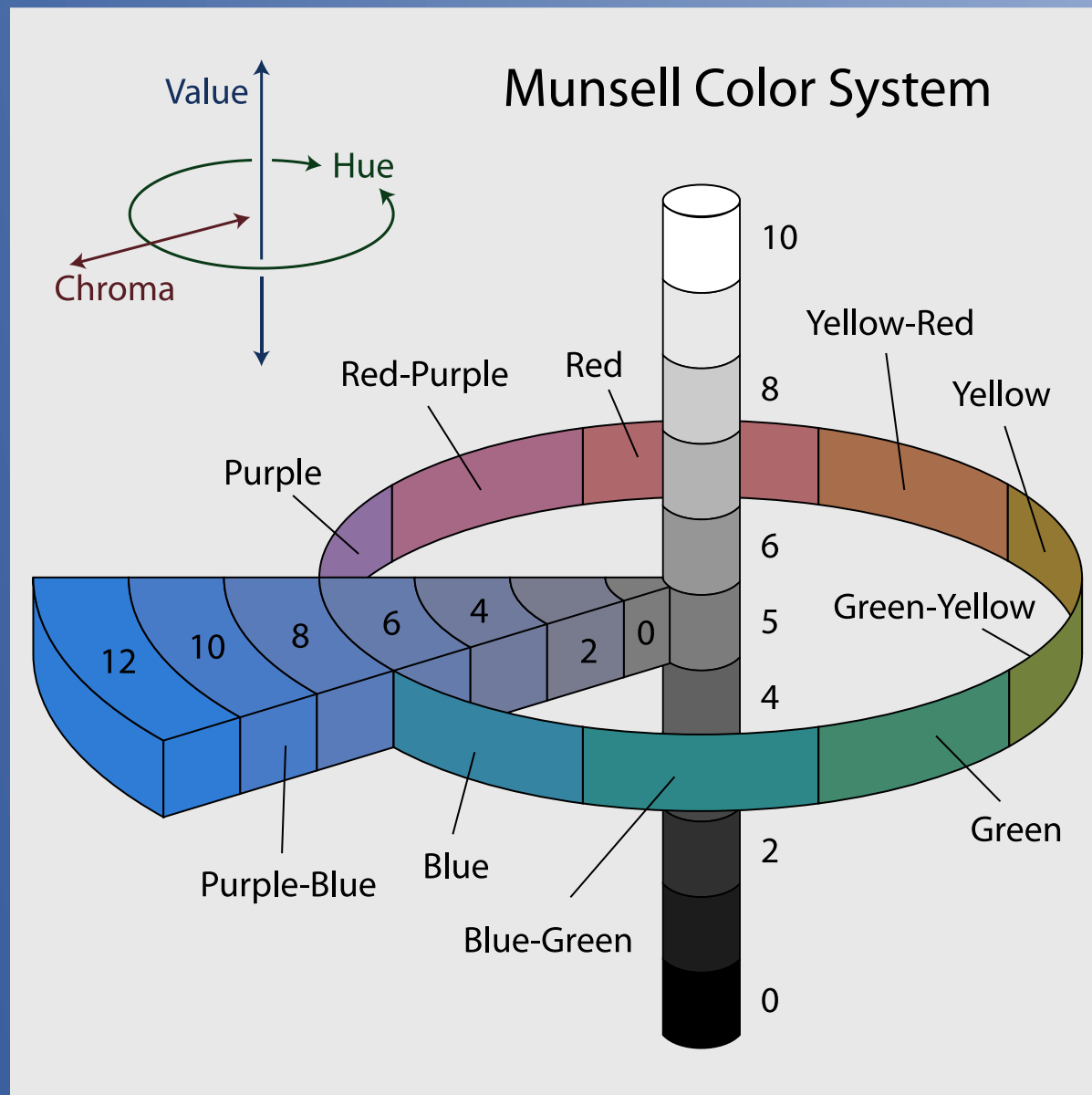
2. Key Factors of Focus

Elements of Art:
Line, shape, form, color, space, and texture



Color: 3 axes

Hue
Saturation
Intensity



3. Sketch Development





3. Sketch Development

Graphic Variable	Sketch #1	Sketch #2	Sketch #3	Sketch #4
Perspective	X	X		
Degree of Abstraction	X	X	X	X
Graphic Style	X	X	X	
Color			X	X



4. Final Map Creation

Materials and Techniques

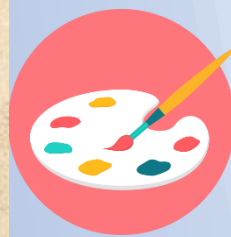
Application:



Visual Analysis:
Nuremberg Chronicles
Bollmann Maps

Sketches

Final Map







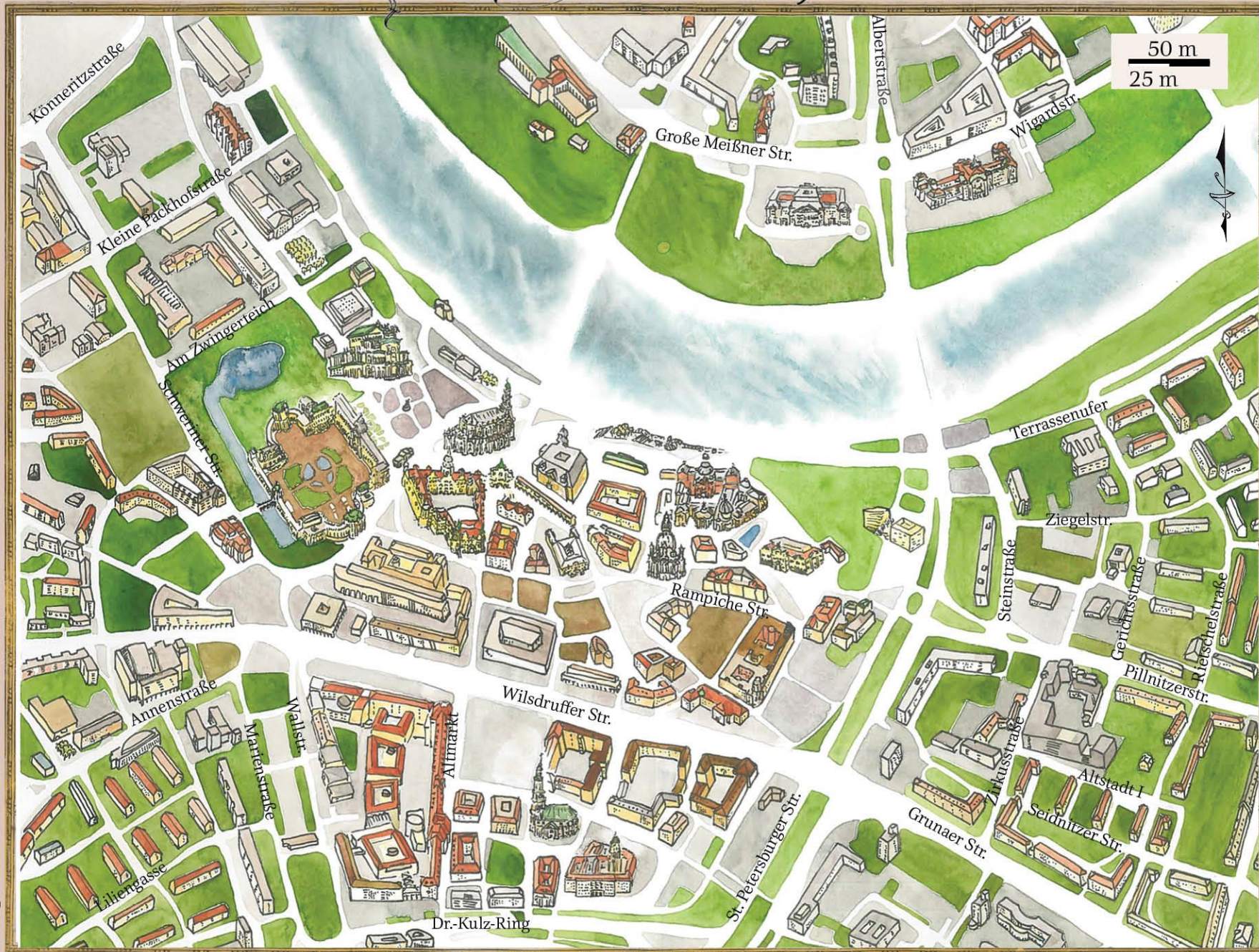






DRESDEN

Scale = 1: 5 000





Discussion

Methodology

Use of final map

Limited factors of focus

Discussion



Thank you